



PIERCE COUNTY HOUSING AUTHORITY

603 South Polk Street, Tacoma, WA 98444 | 253-620-5400

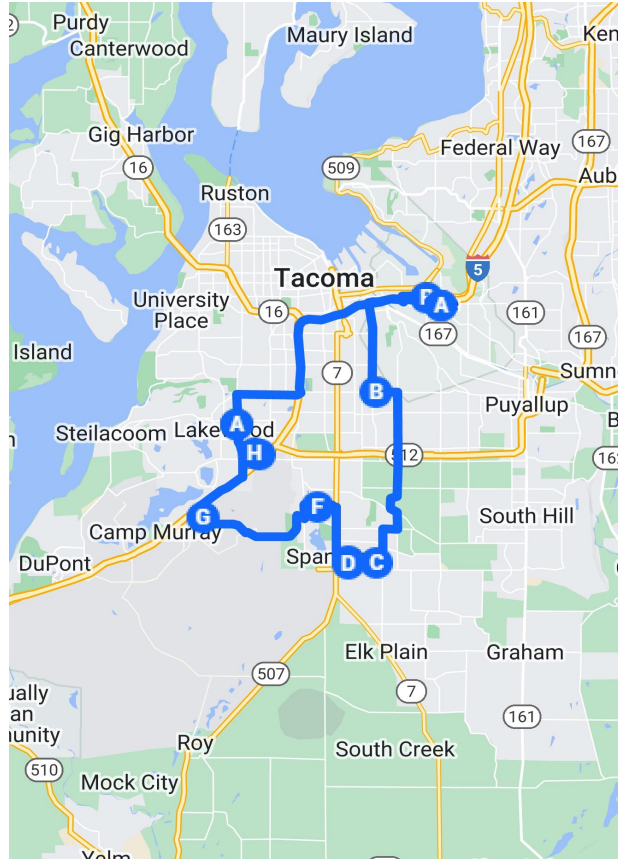
BOARD OF COMMISSIONERS' DRIVING TOUR

PROPERTY INFORMATION HANDBOOK

TUESDAY, JUNE 14TH, 2022

ITINERARY

1. Fife Community Center, 54th Avenue East, Fife, WA, USA
2. 1707 74th St Ct E, Tacoma, WA 98404, USA
3. 17121 19th Ave E, Spanaway, WA 98387, USA
4. 17302 5th Ave E, Spanaway, WA 98387, USA
5. 419 172nd St E, Spanaway, WA 98387, USA
6. 13862 10th Ave S, Tacoma, WA 98444, USA
7. 7320 146th St SW, Lakewood, WA 98439, USA
8. 10810 Lakeview Avenue SW Lakewood, WA 98499
9. 4111 110th St SW, Tacoma, WA 98499, USA
10. 9100 Lakewood Drive Southwest, Lakewood, WA 98499, USA
11. 4600 16th Street East, Fife, WA 98424, USA
12. Fife Community Center, 54th Avenue East, Fife, WA, USA





DEMARK' APARTMENTS

Multifamily Housing



Location:

1707 74th Street Court East
Tacoma, WA 98404

Phone Numbers:

(253) 536-0115

Email:

demark@pchawa.org



The deMark' Apartments were built in 1992. It consists of 93 total units. Its amenities include an outdoor pool, a fitness room, a sauna, and entertainment room, and playgrounds.

Individual units also include oak cabinetry, private patios and decks, and in-unit washer/dryers.



One Bedroom: 597 sq. ft
\$1050 + \$100 W/S/G



Two Bedroom/One Bathroom:
846 sq. ft
\$1300 + \$150 W/S/G



PH 155
Single Family Housing



Location:

17121 19th Ave. E
Spanaway WA98387

PH 155 is a 3 bedroom, 1 bathroom standalone unit that is currently occupied under the PCHA Low Income Public Housing (LIPH) Program.



PH 155 was built in 1978, and was acquired by PCHA in 1994 for \$83,000. It is estimated at 1,041 sq. ft., and sits on a 7,496 sq. ft. lot. It includes painted wooden cabinets, a small garage space, and a fenced yard.

This unit is listed in “fair” condition.

Current third-party estimates value this unit at approximately \$380,000 on the open market, or \$365 per square foot.





PH 008
Single Family Housing



Location:
17302 5TH AVE E
Spanaway WA 98387

PH 008 is a 3 bedroom, 1 bathroom standalone unit that is currently occupied under the PCHA Low Income Public Housing (LIPH) Program.



PH 008 was built in 1980, and was acquired by PCHA in 2006 for \$184,000. It is estimated at 1,056 sq. ft., and sits on a 10,798 sq. ft. lot. It includes wooden cabinets, electric appliances, a garage space, and a fenced backyard.

This unit is listed in “fair/poor” condition.

Current third-party estimates value this unit at approximately \$400,000 on the open market, or \$379 per square foot.



PH 066
Single Family Housing



Location:
419 172ND ST E
Spanaway WA 98387

PH 066 is a 3 bedroom, 1 bathroom standalone unit that is currently occupied under the PCHA Low Income Public Housing (LIPH) Program.



PH 066 was built in 1980, and was acquired by PCHA in 1989 for \$47,000. It is estimated at 1,032 sq. ft., and sits on a 10,014 sq. ft. lot. It includes painted wooden cabinets, a small garage space, and a fenced backyard.

This unit is listed in “fair/good” condition.

Current third-party estimates value this unit at approximately \$380,000 on the open market, or \$369 per square foot.





Hidden Village Apartments Multifamily Housing

**Location:**

13862 10th Avenue South
Tacoma, WA 98444

Phone Numbers:

(253) 536-0115

Email:

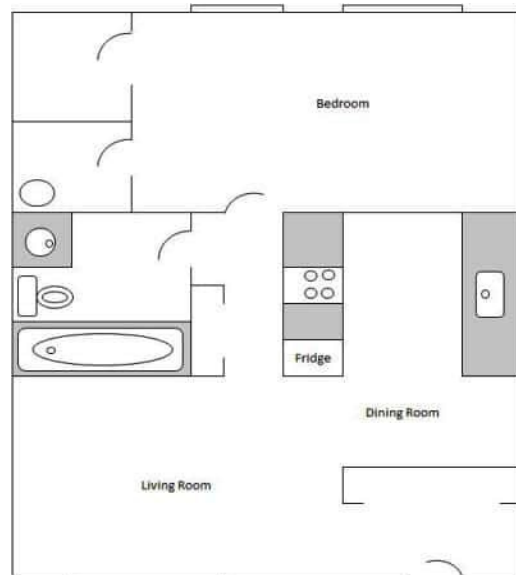
hiddenvillage@pchawa.org



The Hidden Village apartment complex was built in 1976. It consists of 30 total units. Its amenities include large walk-in closets, on-site laundry facilities, deluxe kitchens, patios, and public lawn and picnic areas.



One Bedroom: 627 sq. ft
\$1050 + \$70 W/S/G



Brookridge Apartments Multifamily Housing



Location:

7320 146th Street South West
Tacoma, WA 98439

Phone Numbers:

(253) 581-7102

Email:

brookridge@pchawa.org



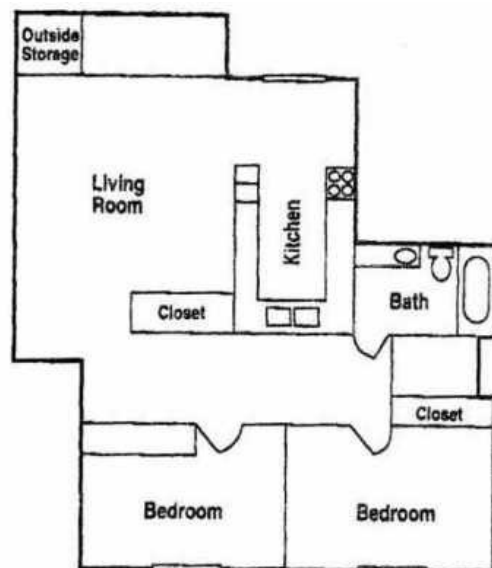
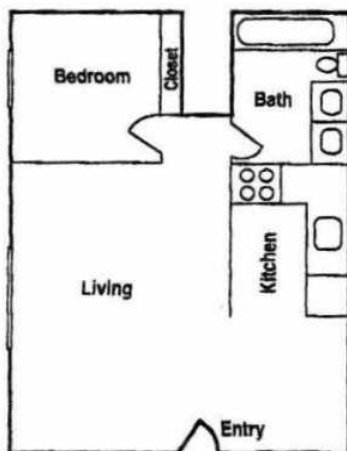
The Brookridge apartment complex was built in 1976 and was acquired by PCHA in 1991. It consists of 69 total units. Its amenities include a playground, a pool, a designated barbecue area, a sports court, and is directly located on a bus line.

Individual units also include dishwashers in two-bedroom units.



Two Bedroom: 714 sq. ft
\$1300 + \$120 W/S/G

One Bedroom: 520 sq. ft
\$1050 + \$70 W/S/G



Village Square Apartments Multifamily Housing



Location:

10810 Lakeview Avenue SW
Lakewood, WA 98499

Phone Numbers:

(253) 581-1839

Email:

villagesquare@pchawa.org

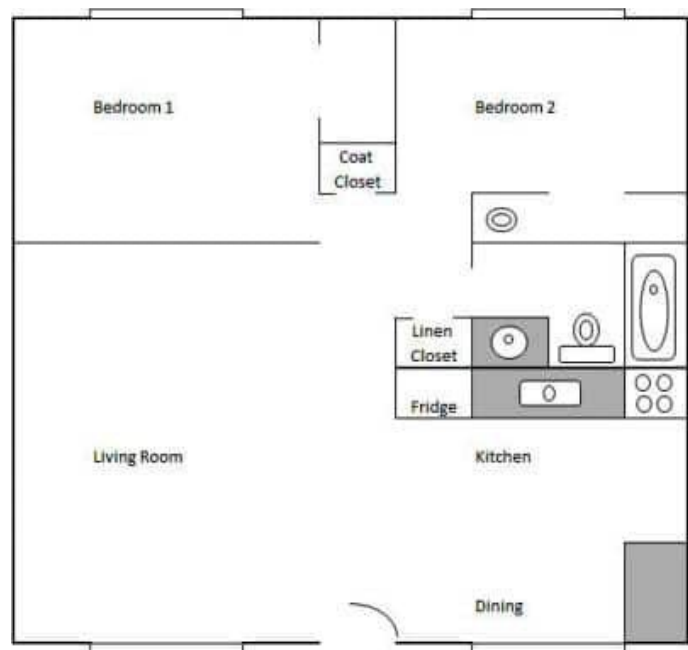
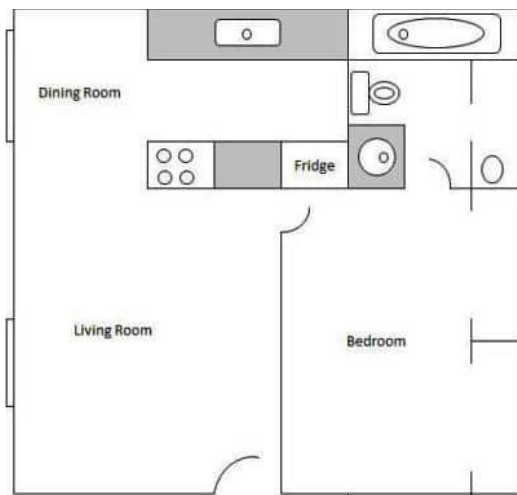


The Village Square apartment complex were built in 1976 and was acquired by PCHA in 1995. It consists of 38 total units. Its amenities include a playground, deluxe kitchens, fireplaces, and on-site laundry facilities.



Two Bedrooms: 672 sq. ft
\$1200 + \$120 W/S/G

One Bedroom: 480 sq. ft
\$1000 + \$70 W/S/G





Oak Leaf Apartments Multifamily Housing

Location:

4111 110th Street SW
Lakewood, WA 98499

Phone Numbers:

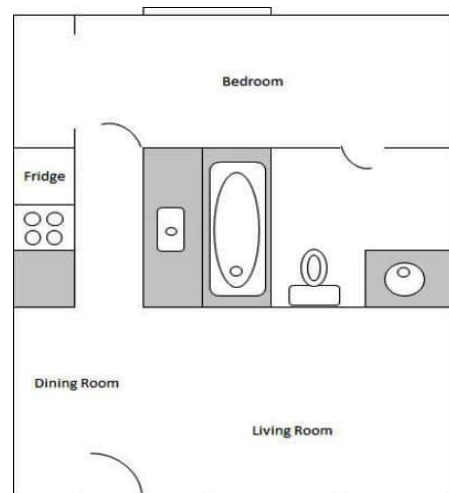
(253) 581-1839

Email:

oakleaf@pchawa.org

The Oak Leaf apartment complex was built in 1967 and was acquired by PCHA in 1982. It consists of 26 total units. Its amenities include a picnic area, a laundry facilities, and Oak Grove.

One Bedroom: 448 sq. ft
\$1000 + \$100 W/S/G





Pierce County
Housing Authority

Lakewood Village Apartments Multifamily Housing



Location:

9100 Lakewood Drive SW
Lakewood, WA 98499

Phone Numbers:

(253) 589-3730

Email:

lakewoodvillage@pchawa.org



The Lakewood Village apartment complex was built in 1976 and was acquired by PCHA in 1991. It consists of 136 total units. Its amenities include walk-in closets, oak cabinetry, dishwashers and garbage disposals in every unit, pantries in 2 & 3 bedroom units, in-unit washer/dryers, a public media room and recreation room, a playground, high speed internet, and an open air pool and fitness center.



One Bedroom: 648 sq. ft
\$1050 + \$100 W/S/G



Two Bedroom/One Bath:
875 sq. ft
\$1300 + \$150 W/S/G



Three Bedroom/Two Bath:
1085 sq. ft
\$1900 + \$200 W/S/G



Chateau Rainier Apartments Multifamily Housing



Location:

4600 16th Street East
Fife, WA 98424

Phone Numbers:

(253) 589-3730

Email:

chateaurainier@pchawa.org



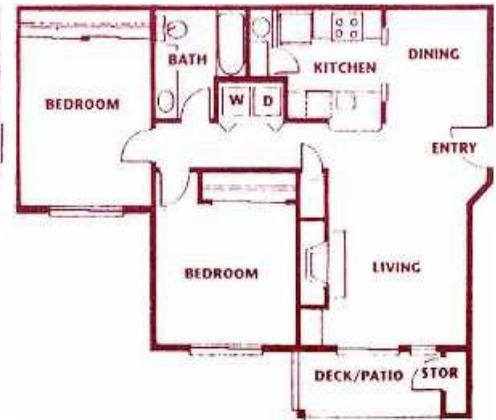
The Chateau Rainier apartment complex was built in 1989. It consists of 248 total units. Its amenities include fireplaces, deluxe kitchens, a weight room, full-size in-unit washer/dryers, new playgrounds, an indoor swimming pool and spa, a sauna, and vaulted ceilings.



One Bedroom: 700 sq. ft
\$1050 + \$100 W/S/G



Two Bedroom: 880 sq. ft
\$1250 + \$150 W/S/G



Two Bedroom/Two Bath:
915 sq. ft
\$1300 + \$150 W/S/G



Three Bedroom/Two Bathroom: 1150 sq. ft
\$1900 + \$200 W/S/G

